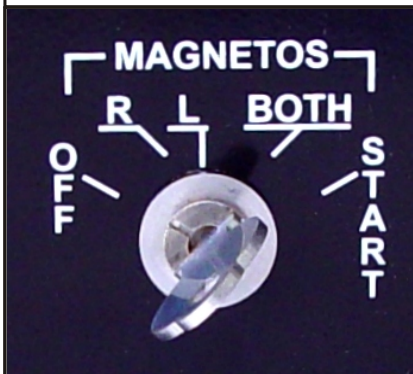


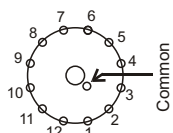
Starter Switch for Flight Simulators

Parts Number 871 722 802 34 91



Picture of Starter Switch, mounted in TRC472 Panel. (Panel not included)

Bottom View - connections 1 (for general use)



For Flight Simulation use, only pins 1 to 5 (positions 6-12 are mechanically locked when properly assembled).

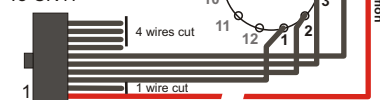
Connections	1	2	3	4	5	C
Off	x					x
Right		x				x
Left			x			x
Both				x		x
Start					x	x

Bottom View - connections 2 (for use on the CCU1 or CCU2)

Cable and connector is not included in the kit

10 pole flatcable connector shown without strain relief (cable not folded!)

To CN17



Connection Table

Connector CN17	Starter Switch
Pin 1	Common
Pin 3	Pin 1
Pin 4	Pin 2
Pin 5	Pin 3
Pin 6	Pin 5

The Starter Switch for Flight Simulation is constructed around a Rotary Switch combined with high quality stainless steel mechanics

The Starter Switch has totally 5 positions, whereof the 5th position is spring returned to the 4th position. The 5th position functions as a starter position.

Once mounted, the key cannot be removed and is therefore safe against losses.

The switch functions are:

- OFF
- Right Magneto
- Left Magneto
- Both Magnetos
- Start (spring returned to position "Both")

The Starter switch can be controlled from the Central Control Unit as offered by SimKits via connector CN17 on the CCU or from any existing electronics.

Mounting Instructions

The Starter Switch can be mounted into the TRC472 Panel (using the additional Filler Ring) or in any user designed panel. See mounting and assembly instructions on the 2nd page of this brochure.

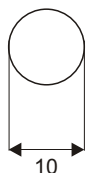
It is recommended to assemble the Starter Switch first completely, prior to mounting it in a panel.

Contact specifications	
Contact configuration	1 CO (SPDT)
Rated current/Maximum peak current A	16/30
Rated voltage/Maximum switching voltage V AC	250/400*
Rated load in AC1 VA	4,000
Rated load in AC15 (230 VAC) VA	750
Standard contact material	AgCdO
Technical data	
Mechanical life AC/DC cycles	10 · 106/20 · 106
Electrical life at rated load AC1 cycles	100 · 103
Operate/release time (bounce included) ms	10/10 - (15/12 sens.)
Insulation according to EN 61810-5	3,6 kV/3
Insulation between contacts (1.2/50µs) kV	3 (4mm)
Dielectric strenght between open contacts V AC	1,000
Ambient temperature range °C	-40...+85
Protection category	IP 50

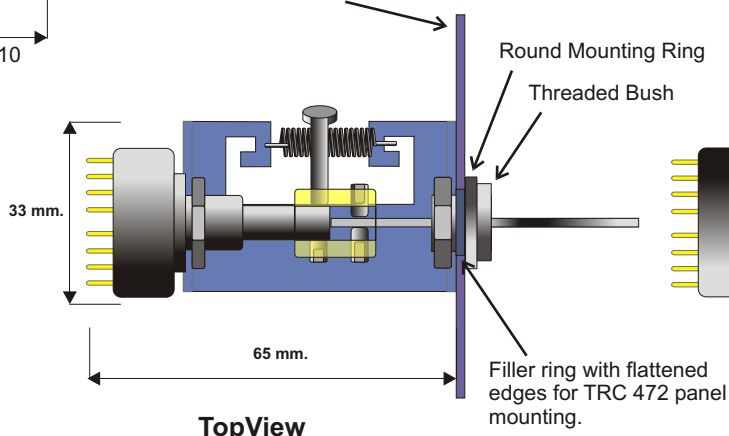
All measurements are in millimeters. (1 Inch = 25.4 mm.)

Key Starter Switch assembled view

Panel cut-out

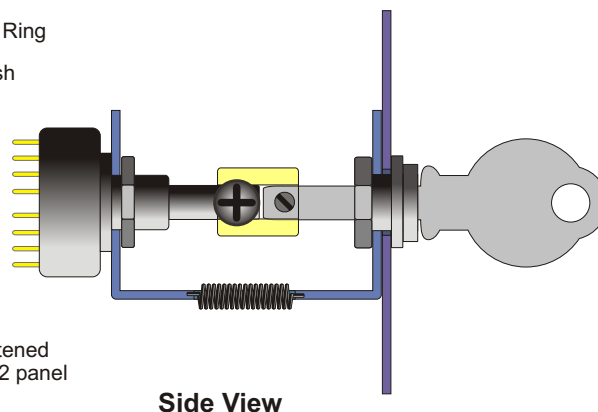


Thickness of possible front panel: 1 to 2,5 mm.



TopView

Filler ring with flattened edges for TRC 472 panel mounting.

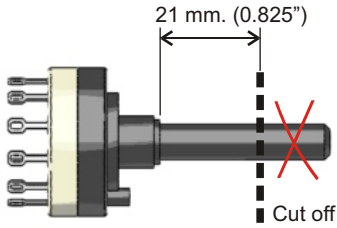
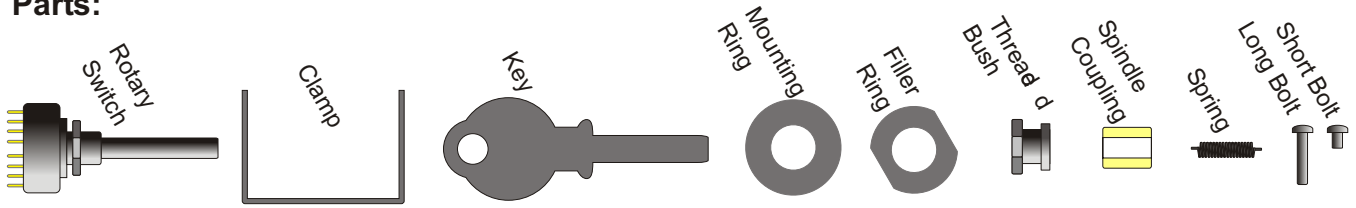


Side View

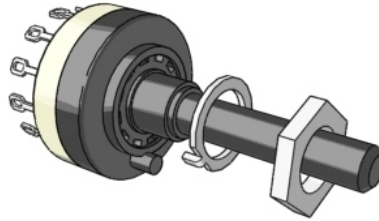
Starter Key Switch for Flight Simulators - Mounting instructions



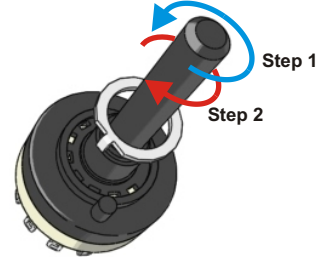
Parts:



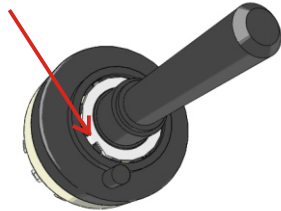
Carefully cut the shaft of the Rotary Switch to leave a length of 21 mm. (0.825 inch).
Note: The Rotary Switch will be delivered with PCB pin connections, not with solder tail as shown in some of the pictures!



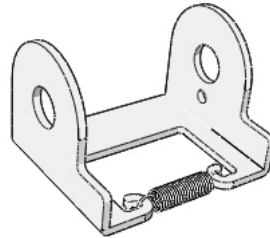
Loosen the nut of the Rotary Switch and lift the ring with the small pin.



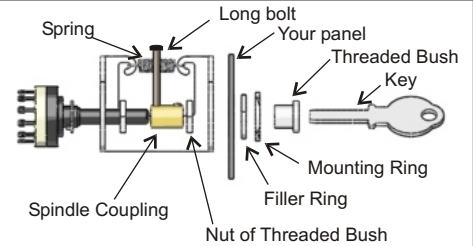
The shaft of the Rotary Switch must be turned to position 4 (first turn completely left, then turn 3 clicks right)



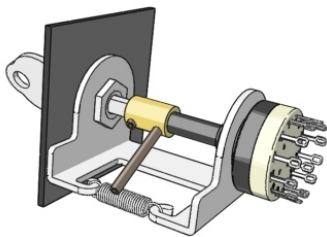
Pull down the ring with the little pin in such a way that the little pin fits in the square hole numbered "5". Keep the ring inserted during further assembly.



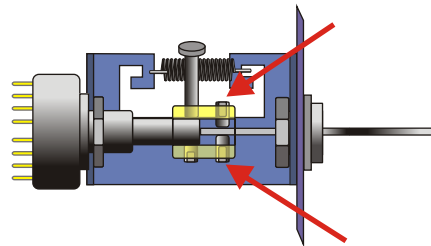
Mount the spring on the clamp as shown in the picture above.



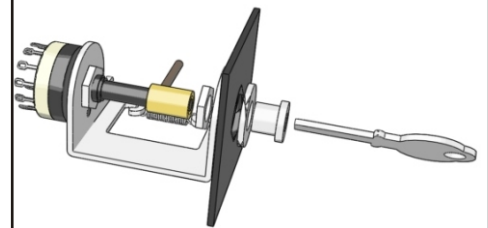
Assembling diagram. Only use the Filler Ring when you have a TRC472 panel. Otherwise drill the proper hole in a front plate of max. 2 mm. and use only the mounting ring. Do not use the Filler Ring for assembly this time!



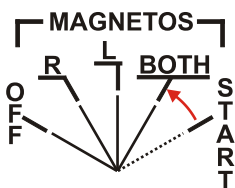
Mount the Spindle Coupling in such a way, that the long bolt rests on the spring (the switch must be in position 4). Do not mount the Key at this moment. Tighten the long bolt and the opposite short bolt just a little first.



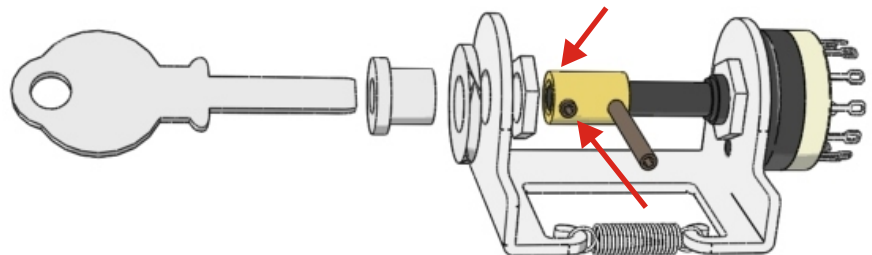
Now mount the key in such a way that both small bolts do position the key exactly in the middle of the copper bushing when tightened. Adjust the bolts in such a way (try and error) that the key turns smoothly.



When the assembly has been carried out to your satisfaction, disassemble the Starter Switch again, but only the Threaded Bush, Mounting Ring and Key to mount the Starter Switch in your panel.



The Starter Switch has 5 positions. Position 1 to 4 are fixed positions, while the 5th position is spring-returned to the 4th position.



It is strongly recommended to turn the small screws properly towards the key. Note: the small screws must be screwed in equally to keep the key in the middle. Finalize the mounting by securing the screws with Locktite to avoid