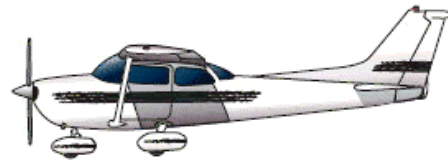


# Desktop Aviator

Flight Simulator Avionics Panels  
2938 North Chandler Drive Hernando, FL 34442

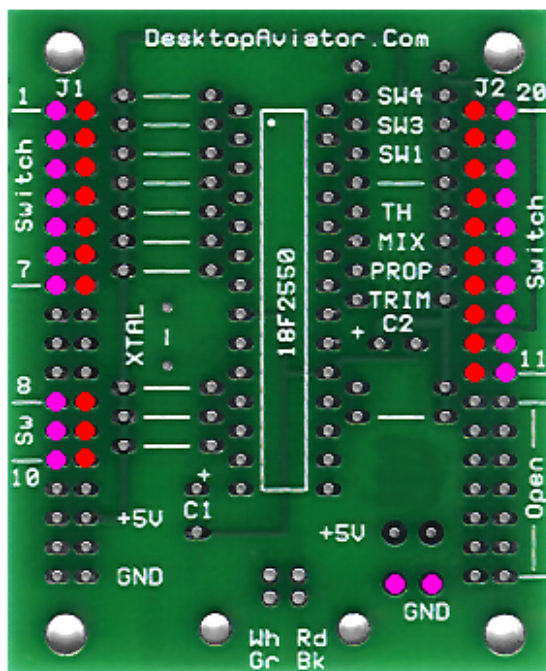
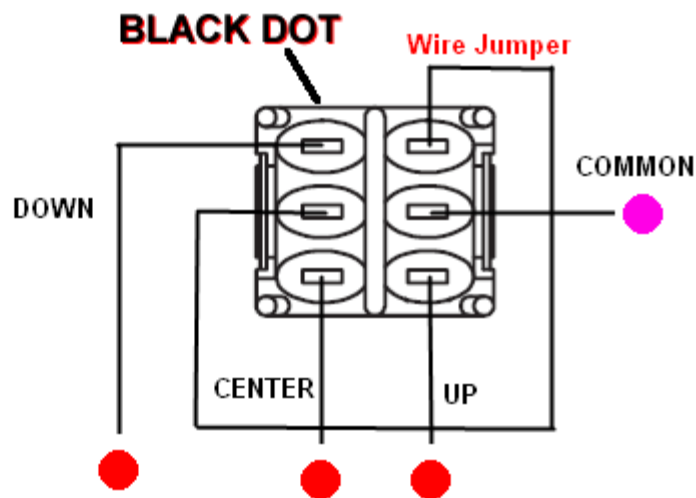
<http://www.DesktopAviator.com>



DesktopAviator@USA.com

## Wiring the MINI DP3T Toggle Switch to our Model 2160 USB Interface.

### REAR VIEW



NOTE: 3 of the 4 wires coming from the toggle switch are shaded in RED, while the 4th wire (Common) is shaded Purple.

To the LEFT is the circuit board of the Model 2160 USB Interface (Less Components). Also note the shading on the J1 and J2 Header connectors (Red and Purple). The corresponding colored dots can be connected to the same color pins of the 2160 board. The COMMON wire on the Toggle Switch can be soldered to any Purple shaded pins on the circuit Board.

The 2160 supports 20 inputs; each toggle switch requires 3 wires, so you can have 6 toggle switches connected to the 2160 board at the same time. The remaining 2 inputs can be used as standard push button inputs. Seeing that 6 toggle switches require a common ground wire, you can solder all Purple shaded terminals together and have only one wire going to the 2160's Purple shaded points.